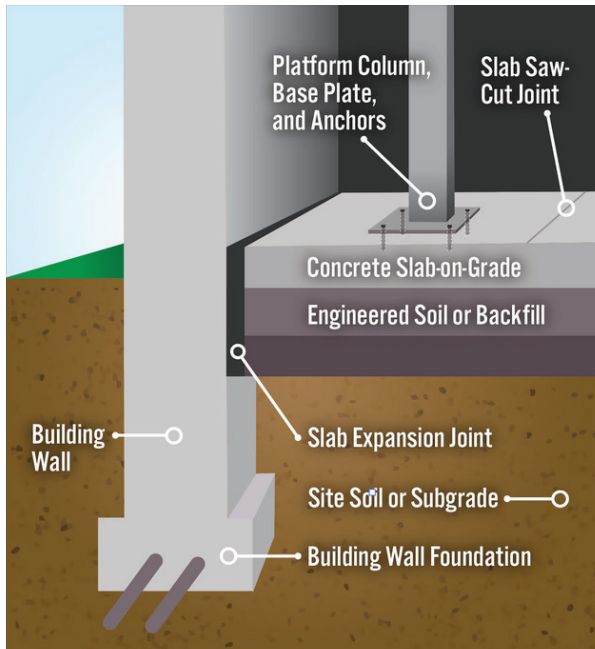


# Concrete Slab Analysis

Start every project on solid ground



## Concrete slab analysis services ensure your concrete slab can support high-concentration loads

Steele Solutions provides turnkey slab analysis services for industrial and material handling facilities.

Whether evaluating new building concrete capacity requirements or recommending reinforcements and modifications for existing concrete floors, we ensure your concrete slab is equipped to safely and efficiently support your high-concentration loads.

## Benefits of Steele Solutions' Slab Analysis

**Expert Feedback You Can Trust.** We deliver clear results and next steps, so you always know where your project stands and how to proceed confidently.

**Time and Cost Savings.** Accurate slab analysis helps avoid costly mistakes like unnecessary reinforcements or post-installation modifications. By addressing potential issues upfront, we save you time, labor, and materials.

**Customized Solutions.** Our evaluations allow for precise, project-specific designs rather than defaulting to overly conservative assumptions. This ensures your structure is efficient, effective, and tailored to your needs.

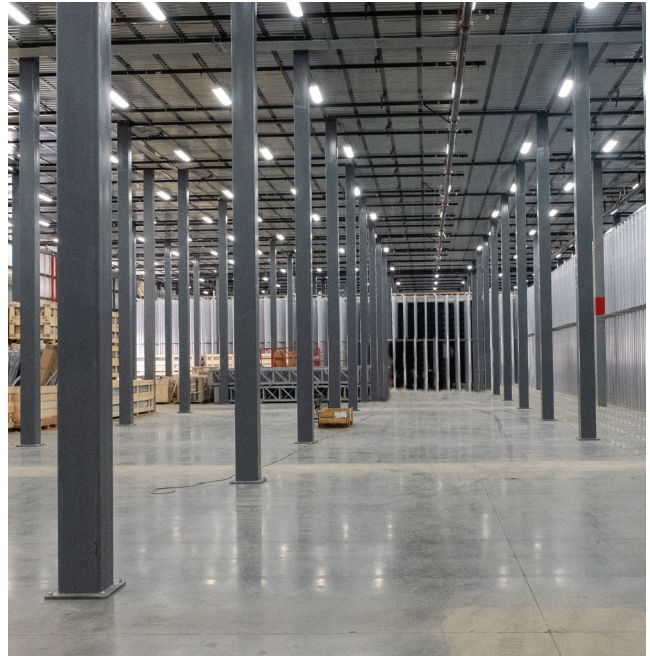
**Streamlined Communication, Faster Timelines.** By consolidating design and slab evaluation under one umbrella, we eliminate the back-and-forth between multiple parties. This results in quicker decisions and a more efficient project timeline.

## Trust Steele Solutions for Careful Evaluation of Slab Capacity

Steele Solutions integrates slab analysis into your overall project delivery. This means fewer handoffs, reduced delays, and a seamless flow of information from design to execution.

Industry-leading engineers who specialize in concrete slab design and evaluation assess critical slab factors, including:

- Soil characteristics
- Column and base plate size
- Joint proximity
- Reinforcement requirements



Start your project with confidence in  
your foundation.

Contact Steele Solutions today.