

Suspend Equipment with Ease and Enhance Vertical Space Utilization

SteeleTrax is a structural steel framing member designed to simplify installation and optimize warehouse and distribution center space. With prefabricated holes spaced 50mm on center, SteeleTrax reduces the need for on-site drilling—lowering labor costs and shortening project timelines.

Key Features of SteeleTrax

Versatile Functionality

Can be used to support a wide range of suspended equipment, including mechanical, electrical, and plumbing (MEP) systems.

Faster Installation

Prefabricated holes reduce field drilling, enhancing labor efficiency and ensuring precise installation.

Built for Durability

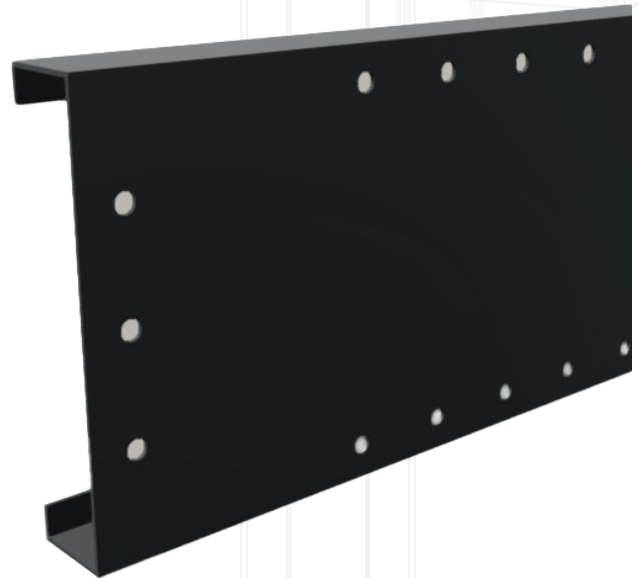
Manufactured using the same high-quality steel as Steele Solutions' trusted platforms.

Adaptable Design

Available in various profile depths (8" - 18") and thicknesses (14-gauge - 1/4").

Made in the USA

Produced in Steele Solutions' state-of-the-art facilities, ensuring domestic availability and consistent quality.



A Reliable and Versatile Solution for Industrial Applications

Steele Solutions' engineering team works closely with customers to develop the most efficient SteeleTrax framing layout that meets building codes and structural requirements, ensuring optimal performance and reliability.

Built with the same high-quality materials as Steele Solutions' platforms, SteeleTrax is designed for strength, reliability, and efficiency. For use in decked platforms and open-grid structures, it offers unmatched adaptability to meet diverse project needs.



Framing Member Specifications

Profile Depths	8 - 18"
Thicknesses	14-Gauge - 1/4"
Max. Member Length	20'
Finish	Powder-Coated

Standard Hole Pattern Specifications

- Holes spaced 50mm on center
- 1/2" hole diameter along the top and bottom of the member
- Holes located 1" from top and bottom edge of member
- Hole pattern can be modified to meet system requirements

Start Optimizing Your Vertical Space Today

Contact Steele Solutions Today